

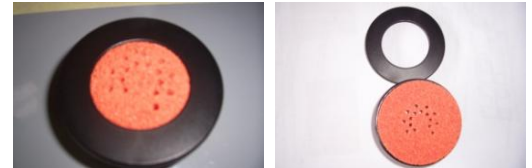


EUREKA-ARCHIMEDE

Preventive Maintenance

- Keep always the sponge humid; if possible use drying retardant products

- Remove the cap cover and the sponge accordingly



- Wash the sponge every week or follow the software indication

- Execute the purge as default request from the software

- Clean every week the dosing head and nozzles with a paper towel soaked in water/solvent.

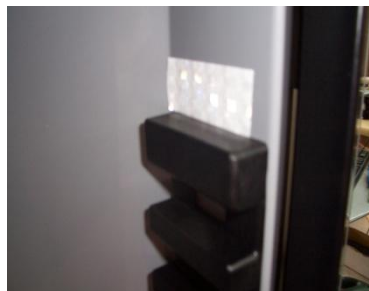
NOTE: If the machine is solvent based use solvent. On the contrary, if the machine is water based, use water or any kind of cleaning products (WITH NO SOLVENT)



- Verify daily that the can detection photocell and reflection tape (only Archimede) is clean, if necessary clean by using alcohol



Photocell Archimede
Fotocellula Archimede



Reflector Tape Archimede
Catarifrangente Archimede



Photocell Eureka
Fotocellula Eureka

NOTE FOR CLEANING, DON'T USE ANY KIND OF SOLVENT



- Keep always on the main power (230v) during the night/weekend(excluded the PC)
- Never run the pumps without colorants, if not available:
disconnect the pump electrically OR Put some liquid into the canister
(NOTE the liquid must be compatible with the colorant)
- Verify visually every week the function of the agitation motor
- Execute a complete software backup every 3 months ,before and after every
modification-up grade
- Maintain always fresh colorant inside the canister, if colorants are older than 40
days. Please verify the viscosity